

Section V Training & Education Human Skeletons

Human Skeleton "Willi"

- Life-size male skeleton, cast from unbreakable plastic
- All fissures, foramina and other details are faithfully reproduced
- Skull can be dismantled into 3 pieces
- Special articulation of rib cage guarantees preservation of shape
- Joint movement can be demonstrated naturally
- Arms, legs and skull can be detached
- Includes mobile castor base and protective dust cover
- Height 176cm
- Weight 9.5kg



3001
Human Skeleton "Willi", life-size

£478.49

Human Skeleton "Bert"

- Natural casting of a human skeleton
- Representation of all anatomical details, fissures, foramina, and processes
- Skull can be dismantled in three parts
- Removable arms and legs. Legs can be dismantled at the knee, also removable foot
- Gliding joints in shoulder, hip and ankle
- Movable shoulder blades
- Articular ligaments of knee, hip, elbow and shoulder on one side
- Marking of muscle origins and insertion points on one body side
- 5-leg, safety castor-mounted stand
- Height 176cm
- Weight 9.5kg



3010
Human Skeleton "Bert", life-size

£832.77

Mini Skeleton "Patrick"

- Miniature skeleton in fine detail
- Approx. one third life size
- All arm and leg joints are articulated for demonstration of joint movement
- Skull is divided into 3 parts
- Available with or without muscle attachments shown ("Little Jim")
- Supplied on stand for demonstration
- Height for Patrick and Jim 65cm
- Weight for Patrick and Jim each, 0.5kg

3030
Mini Skeleton "Patrick"

£293.59

3035
Mini Skeleton "Little Jim", showing muscle attachments

£461.35

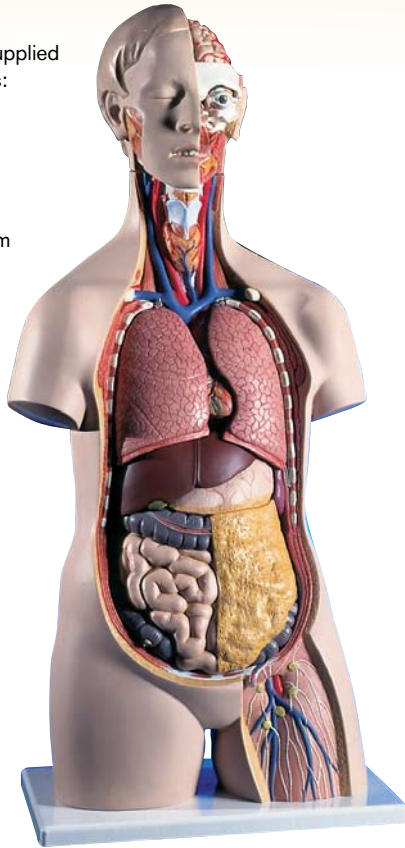


Your local medical supplier is just a phone call away. See cover for full details
Prices shown are exclusive of VAT and delivery

Torso & Figure Models Training & Education Section V

Sexless Torso

- This popular model is supplied with 14 removable parts:
 - 3-part head
 - 2 lungs
 - 2-part heart
 - stomach
 - liver with gall bladder
 - 2 part intestine system
 - front kidney half
 - front bladder half
- Size 87 x 38 x 25cm
- Weight 5.2kg

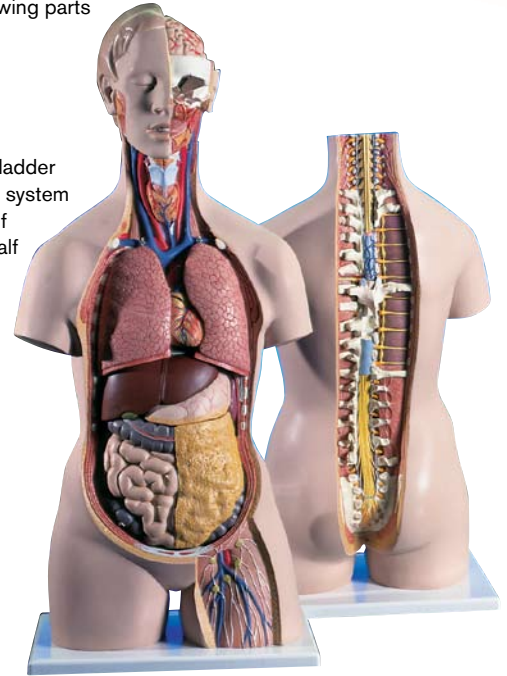


B13 Sexless Torso

£497.55

Sexless Torso with open back

- Based on the B13 model, this model also shows the neck and back exposed from cerebrum to sacrum
- The vertebrae, intervertebral discs, spinal cord, spinal nerves, vertebral arteries and much more are shown in great detail
- 18 part. The following parts are removable:
 - 6-part head
 - 2 lungs
 - 2-part heart
 - stomach
 - liver with gall bladder
 - 2 part intestine system
 - front kidney half
 - front bladder half
 - 7th thoracic vertebra
- Size 87 x 38 x 25cm
- Weight 6.1kg

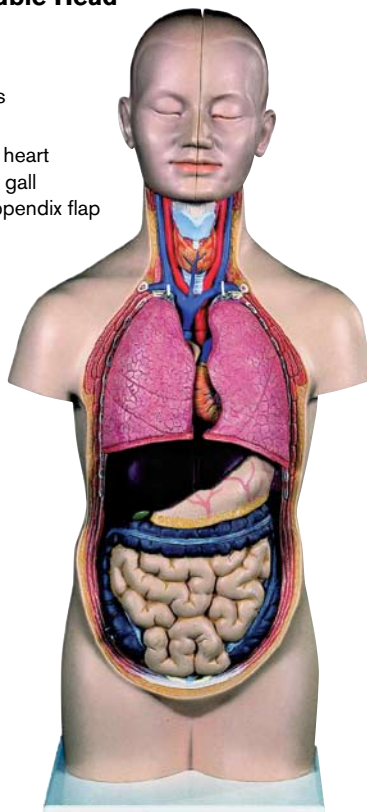


B19 Sexless Torso with open back

£597.36

Mini Torso with Detachable Head

- Faithfully detailed torso in 12 parts, approx. half lifesize
- The head consists of 2 halves with removable half brain
- Torso includes 2 lung halves, heart in 2 parts, stomach, liver with gall bladder, and intestine with appendix flap
- The different parts are numbered for immediate recognition of the anatomy
- Size 18 x 18 x 53cm



B22 Mini Torso with Detachable Head, sexless on stand **£149.72**

Male Muscular Figure

- Life-size male muscular figure in 37 removable parts, with extraordinary accuracy makes this model a unique tool for instructions
- Shows the deep and superficial musculature in great detail
- Size 180 x 110 x 50cm
- Weight 23kg



VA01 Male Muscular Figure

£6790.33

Your local medical supplier is just a phone call away. See cover for full details
Prices shown are exclusive of VAT and delivery

Section V Training & Education Skull, Pelvis & Spine

Human Skull

- Full size human skull cast from unbreakable plastic
- Can be separated into 3 parts: calvarium, base and mandible
- Particular attention is paid to the true-to-life reconstruction of the dentition
- It is practically impossible to distinguish between this model and natural dentition, largely due to the articulation of the Temporal-mandibular joint

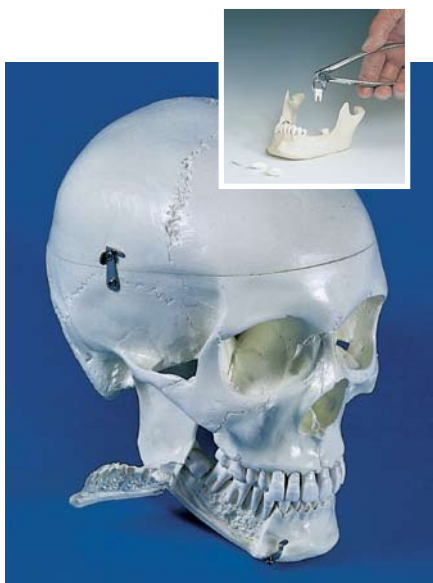


4501 Human Skull, in 3 parts

£81.66

Dental Skull

- Skull can be dismantled in to 4 parts
- The teeth in the upper and lower mandible can be extracted and reinserted
- The lower mandible is open and shows roots, spongiosa, nerve canal and impacted wisdom tooth
- Size 22 x 13 x 17cm



4513 Dental Skull
£134.59

Human Spine

- Life size human spine and pelvis in unbreakable plastic cast from a human spine for exact detail
- Spinal cord together with emerging spinal nerves and arteria vertebralis are all faithfully represented
- Incorporates an unbreakable flexible metal rod for demonstration of the cooperation between vertebrae, discs and nerves
- Life-like reaction of disks when articulating the spine in all directions
- Complete with demonstration stand
- Also available in a mini version



4009 Human Spine, on stand £207.19

Mi212 Mini Spine 30cm high, on stand £106.25

Male pelvis with Sacrum



- Natural casting of an adult male pelvis
- Removable sacrum
- Iliosacral joint movement can be demonstrated
- Vertebrae are mobile mounted
- Femoral stumps are moveable and removable

4057 Male Pelvis with Sacrum

£71.08

Female pelvis with pelvic floor musculature

- Ideally suited to explanation of the female pelvic floor
- 2 hip bones
- Sacrum with coccyx and pelvic floor
- Pelvic floor consists of 4 components
- Life size
- Size 27 x 18 x 19cm



4070 Female Pelvis with musculature

£452.18

Lumbar Vertebrae with Pelvis



4050 Lumbar Vertebrae with Pelvis, on stand
£122.50

- Life size model of the lumbar region of the spine and pelvis on demonstration stand
- Fully articulated for demonstration of lower back conditions
- Spinal discs are faithfully reproduced
- Patient can place his/her finger in between the vertebrae to demonstrate the enormous pressures on the intervertebral disc during flexing

Your local medical supplier is just a phone call away. See cover for full details

Prices shown are exclusive of VAT and delivery

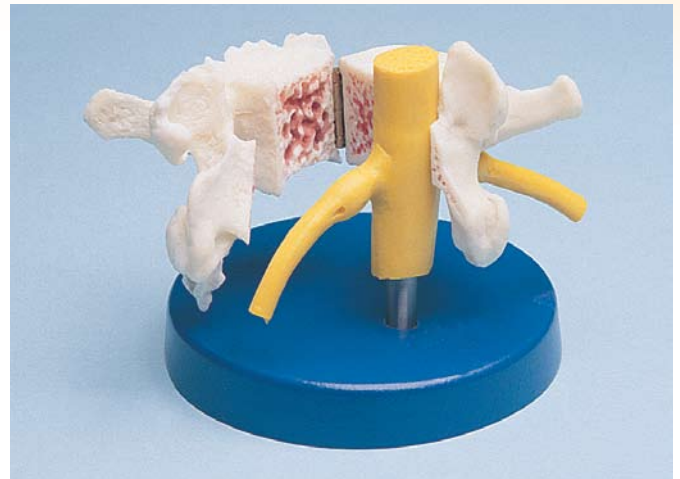
Osteoporosis Vertebrae



- 3 vertebrae model showing progressive stages of osteoporosis
- Upper vertebrae shows a healthy bone structure
- Middle vertebrae shows osteoporotic bone structure
- Lower vertebrae shows osteoporosis at an advanced stage with crushed roof and basal plate
- Individually removable from stand
- Size 16cm (h)

4078 £49.91
3 Stage Osteoporosis model

Osteoporosis Vertebrae



- Medially cut vertebrae with spinal nerves
- Folding model showing normal bone structure and arthritic deformation and osteoporotic bone structure on the other side

4069 £136.11
Folding Osteoporosis Vertebrae

Lumbar Vertebrae with Prolapsed Intervertebral Discs

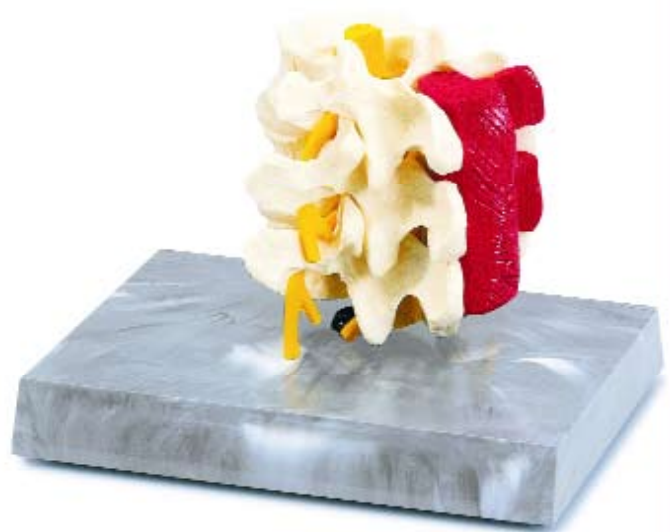
- Consisting of 3 lumbar vertebrae with intervertebral discs, spinal cord and emerging spinal nerves
- One normal intervertebral disc is supplied, one intervertebral disc with a lateral prolapse and one intervertebral disc with medial prolapse
- This model can be dismantled and the intervertebral discs exchanged
- Natural casting, with removable stand



4047 £49.91
Lumbar Vertebrae with Prolapsed Discs

Lumbar Vertebrae with Muscle

- This model shows the lumbar vertebrae L2, L3 and L4 with intervertebral discs and nerves, in addition to the erector muscle
- Original size, natural casting



4074 £77.50
Lumbar Vertebrae with Muscle

Your local medical supplier is just a phone call away. See cover for full details
Prices shown are exclusive of VAT and delivery

Section V Training & Education Joint & Muscle Models

Miniature Joints with Joint Cross-Section



- Individual miniature joint models on stands, with cross section of the respective joint fixed to the stand
- Approximately half natural size
- Choose from hip, knee or shoulder
- Allows demonstration of the action of each particular joint and assists in the explanation of problems and conditions
- Each model's dimensions 160 x 120 x 200mm

4523	Miniature Hip Joint, on stand	£32.50
4522	Miniature Knee Joint, on stand	£32.50
4520	Miniature Shoulder Joint, on stand	£32.50

Shoulder with Ligaments and Muscles

- Natural size
- Ligamentary apparatus
- Infraspinatus muscle
- Teres minor muscle
- Teres major muscle
- Subscapular muscle
- Supraspinatus muscle
- Size 12.5 x 15.5 x 14cm
- Stand mounted



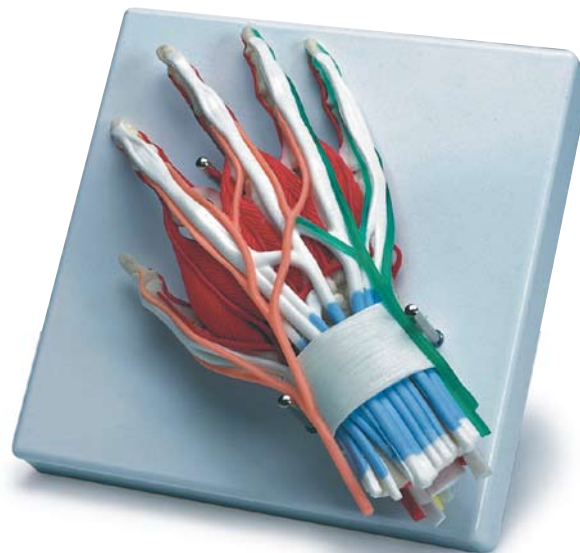
4661	Shoulder with Attachments	£89.23
-------------	---------------------------	---------------

Shoulder Joint with Ligaments



- Natural casting of a human shoulder joint. Shoulder girdle (shoulder blade and clavicle) with upper arm stump
- The principal ligaments are represented in addition to sections of the joint capsule
- The main movements of the shoulder joint, such as anteversion, retroversion, outer and inner rotation and abduction can be demonstrated

4550	Shoulder Joint with Ligaments	£71.08
-------------	-------------------------------	---------------



Hand with Hand Joint

- Natural casting of the hand with representation of the intermediate muscles, medial, ulnar and radial nerves
- Includes tendons, ligaments and arteries
- The palmar and thenar spaces are recognisable
- The transverse ligament can be severed for demonstration of carpal tunnel syndrome
- Includes stand

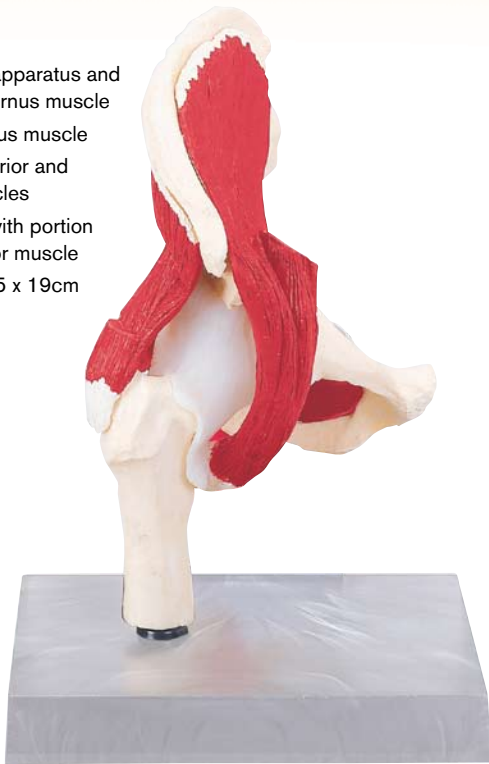
M70	Hand with Hand Joint	£754.64
------------	----------------------	----------------

Your local medical supplier is just a phone call away. See cover for full details
Prices shown are exclusive of VAT and delivery

Hip, Knee & Foot Models **Training & Education** Section V

Hip with Attachments

- Natural size
- Ligamentary apparatus and obturator externus muscle
- Gluteus medius muscle
- Gemellus inferior and superior muscles
- Iliac muscle with portion of psoas major muscle
- Size 12 x 14.5 x 19cm



4663 Hip with Attachments **£89.23**

Hip Joint with Ligaments

- Natural casting of a human hip joint
- The femoral stump is retained in the hip joint by the ligamentary apparatus
- Allows demonstration of the hip joint
- On removable stand



4553 Hip Joint with Ligaments **£71.08**

Knee with Ligaments

- Natural casting of a human knee joint, with stumps of femur and lower leg
- The insertion tendons of the straight muscle of the thigh, kneecap with patella tendons lateral ligaments, meniscae and cruciate ligaments are manufactured from elastic synthetic material
- The principal movements of the knee joint, such as flexion and extension and outer and inner rotation can be demonstrated
- On removable stand



4552 Knee Joint with Ligaments **£71.08**

Foot with Ankle

- Shows all important muscles, nerves, arteries and tendons
- Moulded from human bone
- Removable stand



M60 Foot with Ankle **£1117.59**

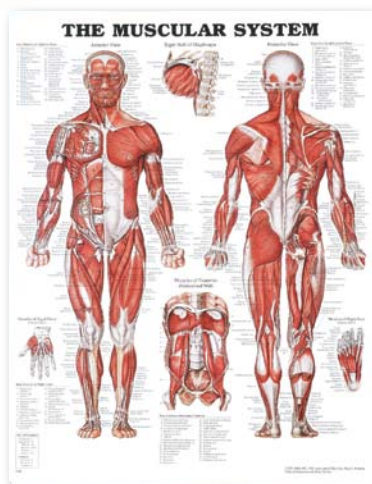
Your local medical supplier is just a phone call away. See cover for full details
 Prices shown are exclusive of VAT and delivery

Section V Training & Education Anatomical Charts

Training and Education encompasses a huge variety of anatomical charts, models and training models. This is only a representation of the range that we offer.

Should the item you require not be shown in this catalogue, please call our sales line where our advisors will be happy to source the required item for you.

Anatomical Charts



The Muscular System

8946PL Poster size 20"x26"
laminated



The Skeletal System

8943PL Poster size 20"x26"
laminated

Understanding Osteoporosis

9881PL

Poster size 20"x26" laminated

Understanding Diabetes

9755PL

Poster size 20"x26" laminated

Understanding Hypertension

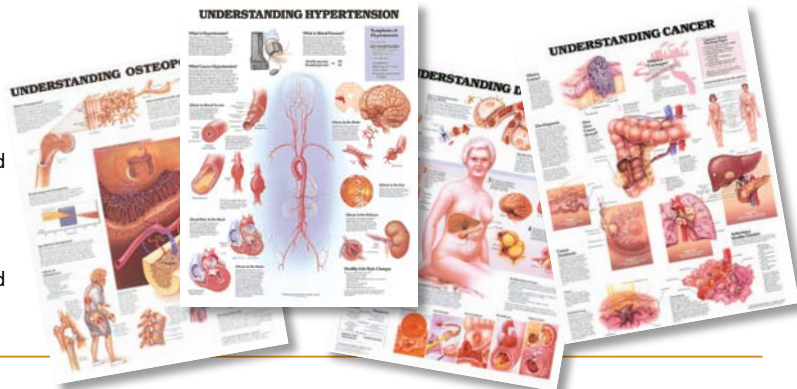
9798PL

Poster size 20"x26" laminated

Understanding Cancer

9756PL

Poster size 20"x26" laminated



Understanding Menopause

9977PL

Poster size 20"x26" laminated

The Respiratory System

9766PL

Poster size 20"x26" laminated

Understanding Cholesterol

9882PL

Poster size 20"x26" laminated

The Importance of Weight Control

9770PL

Poster size 20"x26" laminated

Dangers of Smoking

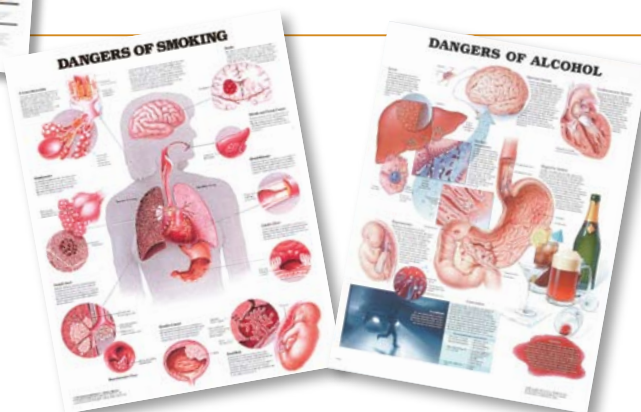
9865PL

Poster size 20"x26" laminated

Dangers of Alcohol

9696PL

Poster size 20"x26" laminated



All Poster Laminated Charts

£22.50

Your local medical supplier is just a phone call away. See cover for full details
Prices shown are exclusive of VAT and delivery

Ear Model

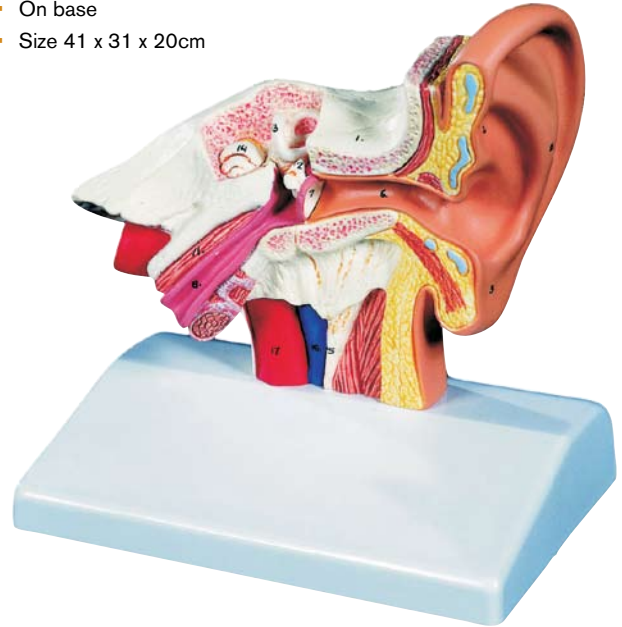


- Enlarged approx. 3 times and dissectible into 4 parts, this model is an accurate representation of the anatomy of the ear
- Shows the external ear canal, middle and inner ear
- Eardrum with hammer and anvil, removable
- Cochlea removable and dissectible into 2 parts
- Supplied complete on demonstration stand

E10 Ear Model, in 4 Parts **£114.93**

Desktop Ear Model

- 1.5 times life size
- This superb representation of the outer, middle and inner ear, shows eardrum, with hammer and anvil as well as labyrinth with stirrup and cochlea
- On base
- Size 41 x 31 x 20cm



E12 Desktop Ear Model **£49.91**

Eye Model



- Enlarged approx. 3 times and dissectible into 6 parts, this detailed model of the eye is ideal for demonstration of most ophthalmic conditions
- Includes: Sclera with cornea and muscle insertions, vascular tunic with iris, vitreous body with retina and lens
- Size 9 x 9 x 15cm
- Mounted on convenient stand, for demonstration and storage
- Also available mounted in complete orbita, showing the 5 muscles of the eyeball, on stand

F15 Eye Model, in 6 Parts **£74.10**

F13 Eye Model in Orbita, 7 Parts **£240.46**

Eye Model

- Enlarged approx. 5 times, dissectible into 11 parts. Shows the eye with optic nerve in its position in the bone orbit (floor and medial wall) allowing a better understanding of the relationship between eye, bone, muscles and outer structures of the eye. Dissectible into;
- Two halves of the sclera
- M. Rectus superior, M. Rectus lateralis
- Vitreous humour
- Associated structures
- Optic Nerve
- Cornea half, lens
- Tear gland
- Size 33 x 30 x 38cm

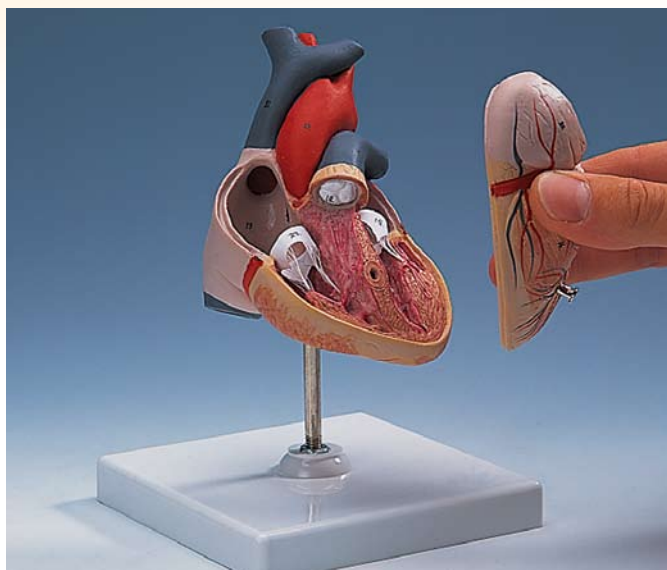


VJ500A Eye Model **£633.65**

Your local medical supplier is just a phone call away. See cover for full details
Prices shown are exclusive of VAT and delivery

Section V Training & Education Heart Models

Heart Model

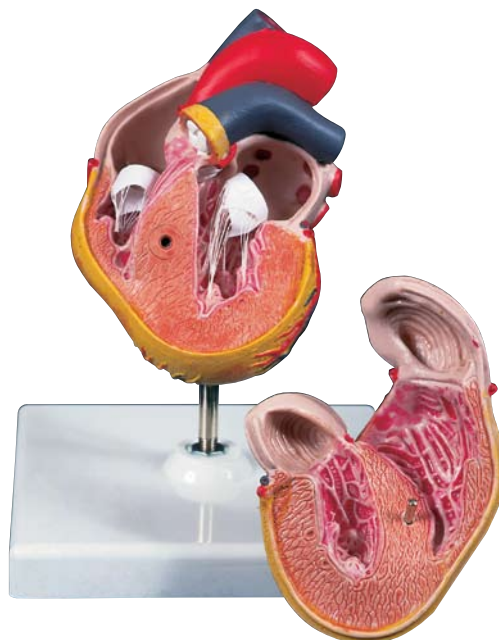


- Detailed model of the heart at approx. $\frac{3}{4}$ life size
- Upon opening this model the atrium cordis, ventricles and cardiac valves are presented
- The different parts are numbered for immediate recognition of the anatomy
- Dissectible into 2 parts
- Conveniently mounted on demonstration stand

G08 Heart Model in 2 parts **£51.42**

Heart model, 2 part, with Left Ventricular Hypertrophy. (LVH)

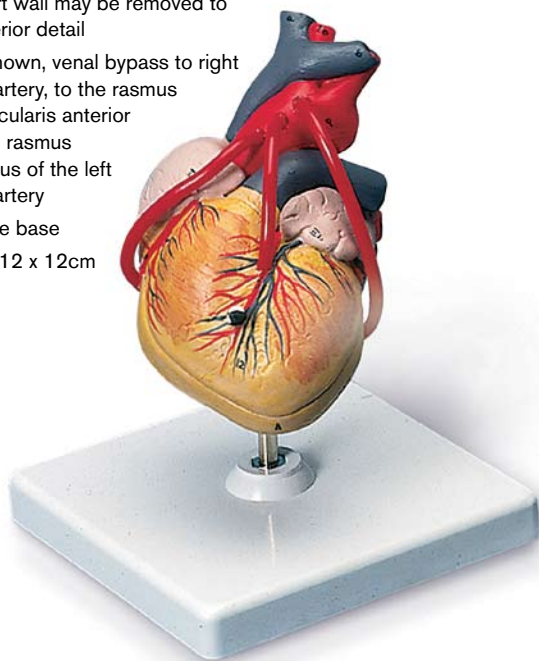
- Model shows long term alterations resulting from high blood pressure
- Muscular wall of the left heart ventricle is considerably thickened and the tip of the heart is visibly rounded off



G04 2 part heart model with LVH **£83.18**

Heart with Bypass

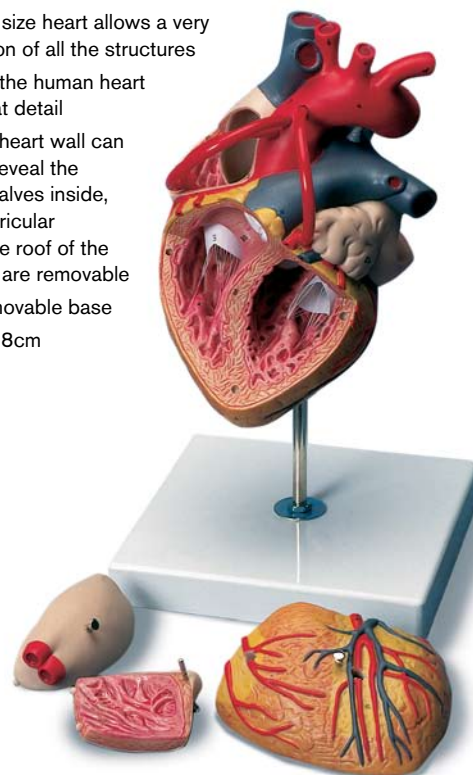
- 2 part heart shown - life size
- Ventricles, atriums, valves, veins and aorta all shown
- Front heart wall may be removed to reveal interior detail
- Bypass shown, venal bypass to right coronary artery, to the rasmus interventricularis anterior and to the rasmus circumflexus of the left coronary artery
- Removable base
- Size 19 x 12 x 12cm



G05 Heart with Bypass **£83.18**

Heart Model with Bypass 4 Part

- This 2 times life size heart allows a very easy identification of all the structures
- The anatomy of the human heart is shown in great detail
- The front of the heart wall can be removed to reveal the chambers and valves inside, also the right auricular appendix and the roof of the left-hand atrium are removable
- Comes with removable base
- Size 32 x 18 x 18cm



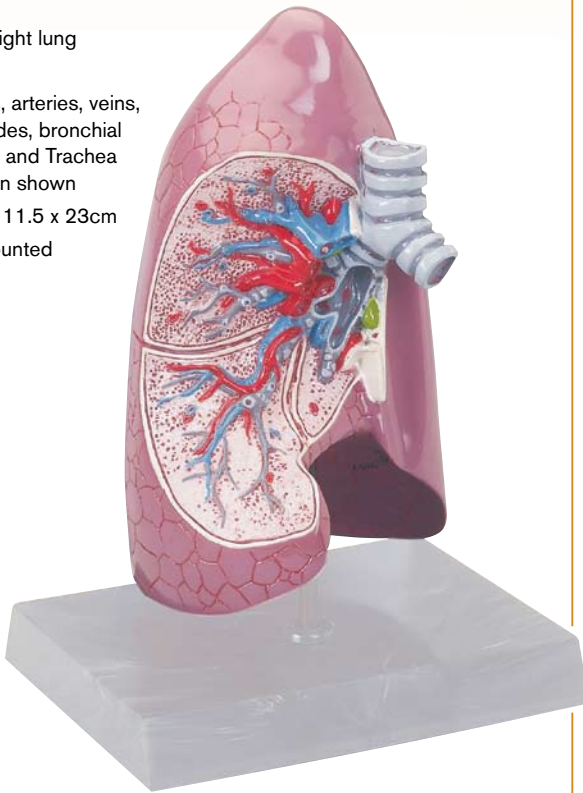
G06 Heart Model with Bypass, 4 Part **£346.32**

Your local medical supplier is just a phone call away. See cover for full details
Prices shown are exclusive of VAT and delivery

Lung & Larynx Models Training & Education Section V

Half Lung

- Life size right lung
- Cut away
- Bronchus, arteries, veins, lymph nodes, bronchial passages and Trachea Bifurcation shown
- Size 14 x 11.5 x 23cm
- Stand mounted

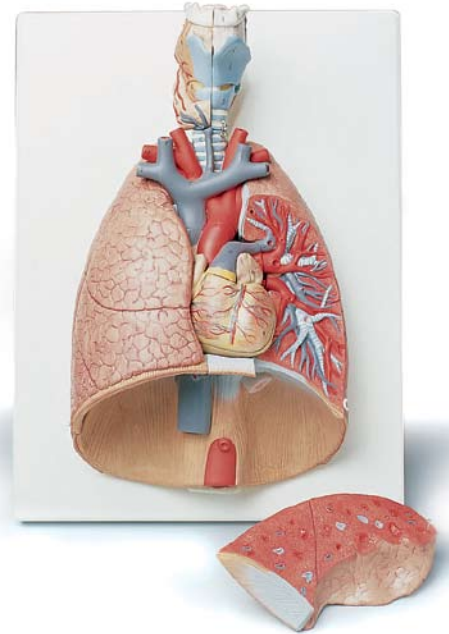


G50 Half Lung **£81.66**

Lung Model, 7 Part

This life size model is mounted on a sturdy baseboard and shows the following features:

- 2 Part larynx (removable)
- Trachea with bronchial tree
- 2 Part heart (removable)
- Subclavian artery and vein
- Aorta
- Pulmonary artery
- Oesophagus
- 2 lungs (front halves removed)
- Diaphragm
- Size 31 x 41 x 12cm



G15 Lung Model, 7 Part **£424.96**

Larynx Functional Model

The epiglottis, vocal cords and arytenoids cartilage are movable on this 2.5 times full size functional model to demonstrate their function

The following structures are represented:

- Hyoid bone
- Thyroid cartilage
- Cricoid cartilage
- Thyroid
- Parathyroid glands
- Size 14 x 14 x 28cm



G20 Larynx Functional Model **£172.40**

Larynx Functional Model 7 Part

This medially, sectioned model shows:

- Nerves
- Thyroid Gland
- Dissectable into 2 halves. Thyroid cartilage, 2 muscles and 2 thyroid gland halves are removable
- On stand
- Size 12 x 12 x 23cm



G21 Larynx Functional Model, 7-part **£232.89**

Your local medical supplier is just a phone call away. See cover for full details
Prices shown are exclusive of VAT and delivery

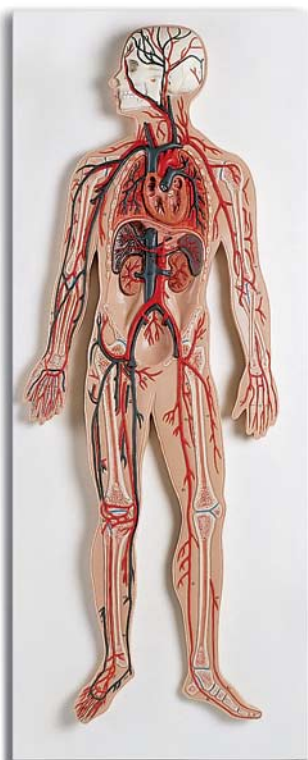
Section V Training & Education Models

Circulatory System Relief Model

- 1/2 life-size model is ideal for teaching how the entire vascular system works in the human body

It shows the following:

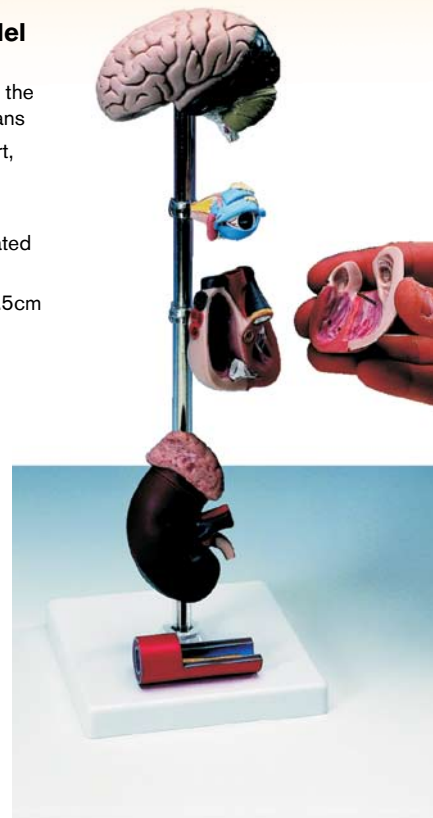
- Arterial system
- Venous system
- Heart
- Lung
- Liver
- Spleen
- Kidneys
- Part of the skeleton
- Size 80 x 30 x 6cm



G30 Circulatory System Relief Model **£255.58**

Hypertension Model

- 7 part model showing the most susceptible organs
- Brain, eye, 2 part heart, 2 part kidney
- Enlarged artery
- All organs can be rotated or removed
- Size 34.5 x 11.5 x 11.5cm
- Stand mounted



G35 Hypertension Model **£179.96**

Arteriosclerosis Model

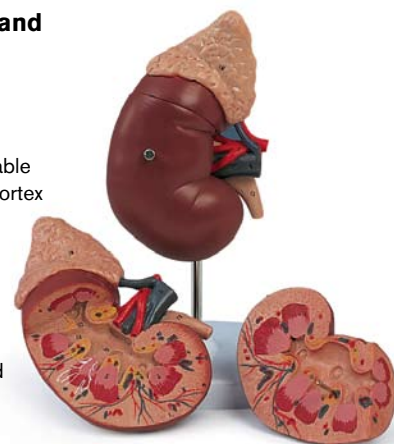


- 2 part model
- Changes in blood vessels due to arteriosclerosis can be shown
- Horizontally dissected artery fork is shown with arteriosclerotic changes in 4 stages from slightly sedimented to completely clogged vessel
- Mounted on base

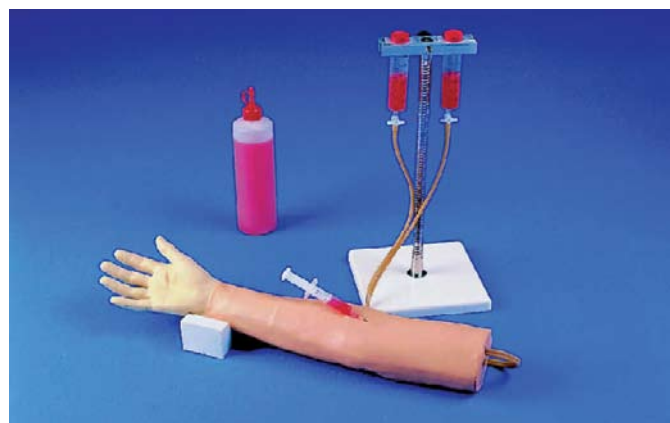
G40 Arteriosclerosis Model **£58.98**

Kidney with Adrenal Gland

- 2 part showing
- Renal and adrenal vessels
- Upper portion of ureter
- Front half of kidney is removable to enable demonstration of cortex medulla and vessels as well as renal pelvis
- Numbered parts with key card
- Size 20 x 12 x 12cm
- Mounted on removable stand



K12 Kidney with Adrenal Gland **£81.66**



Injection Training Arm with Hand

- Invaluable training model for drawing blood, IV injections and infusion techniques
- Suitable when training medical students, nurses, anaesthiologist etc.
- The model is a life-cast showing veins in fine detail
- Skin is made from plastic specially selected to allow natural palpation of the veins
- Includes: Injection training arm, powdered blood simulator, syringe and IV system, bottle and stands

7010	Injection Training Arm, complete	£210.21
7014	Replacement blood	£4.75
7022	Replacement veins	£9.07

Your local medical supplier is just a phone call away. See cover for full details
Prices shown are exclusive of VAT and delivery

Digestive System

- 3 part
- Life size model depicting entire digestive system
- Nose, mouth cavity and pharynx
- Esophagus, GI tract
- Liver with gall bladder
- Pancreas and spleen
- Duodenum, cecum and rectum are opened
- Transverse colon and front stomach wall are removable
- Mounted on baseboard
- Size 81 x 33 x 10cm

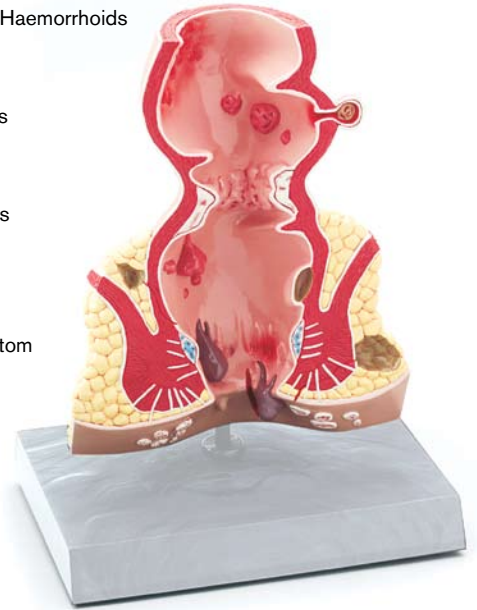


K21 Digestive System

£397.73

Rectum

- 1.5 times life size showing inner structure and different diseases:
- Ulcerative Colitis
- Internal and External Fistula
- Internal and External Haemorrhoids
- Annular Cancer
- Sessile Polyp
- Submucosal Abscess
- Skin Tag
- Pedunculated Polyp
- Supralelevator Abscess
- Ischiorectal Abscess
- Cryptitis
- Diverticulum
- Condyloma Acuminatom
- Fissure
- Condyloma Latum
- Size 15.5 x 6.5 x 18cm
- Stand mounted

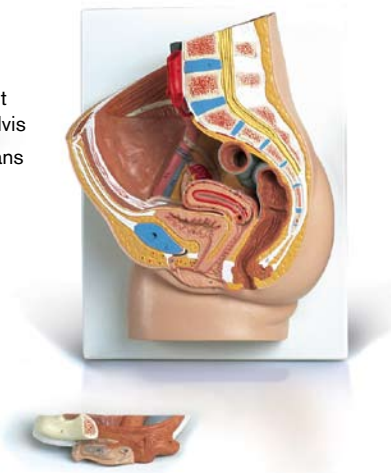


K90 Rectum

£74.10

Female Pelvis

- 2 part showing all important structures of the female pelvis
- One half of the genital organs with bladder and rectum is removable
- Size 31 x 41 x 20cm
- Baseboard mounted

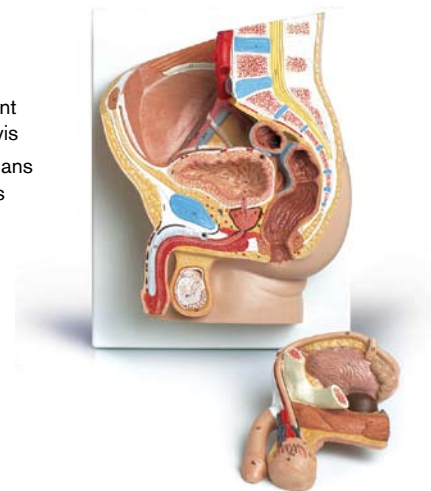


H10 2 Part Female Pelvis

£172.40

Male Pelvis

- 2 part showing all important structures of the male pelvis
- One half of the genital organs with bladder and rectum is removable
- Size 31 x 41 x 17cm
- Baseboard mounted

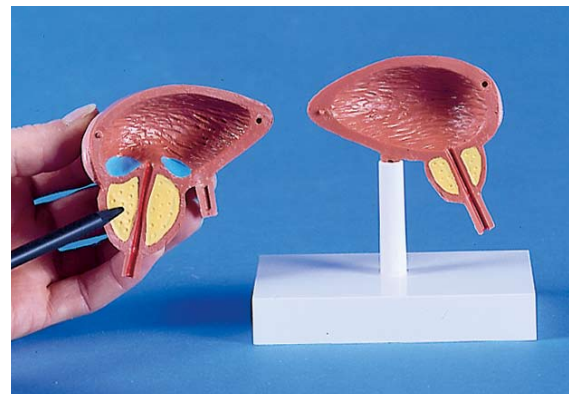


H11 2 Part Male Pelvis

£172.40

Prostate Model

- 2 part showing changes in the prostate cause by BPH
- One half shows healthy prostate with bladder
- One half shows diseased prostate with narrowing of urethra and residual urine
- Size 12 x 8 x 12cm
- Removable stand



1260

Prostate Model

£45.00

Your local medical supplier is just a phone call away. See cover for full details

Prices shown are exclusive of VAT and delivery

Section V Training & Education Pregnancy Models



Pregnancy Series

Complete series shows stages of development. All foetus or embryo models are shown in different typical positions. Available as a complete 8 model series or individually.

L10/1	1st month embryo	£78.64
L10/2	2nd month embryo	£78.64
L10/3	3rd month embryo	£83.18
L10/4	4th month Foetus (abdomen presentation)	£102.84
L10/5	5th month Foetus (breech presentation)	£104.35
L10/6	5th month Foetus (dorsal presentation)	£111.91
L10/7	5th month Twins	£130.06
L10/8	7th month Foetus (normal presentation)	£127.03
L10	Complete 8 model series	£718.34
L11	Complete 8 model series plus Embryo 25x life size	£754.64

Pregnancy Pelvis

- 3 part median section in 9th month of pregnancy
- Removable foetus
- Ideal for studying the normal position prior to birth
- Uterus with 3rd month embryo is mounted on base for added detail
- Size 38 x 25 x 40cm
- Stand mounted



L20 3 part Pregnancy Pelvis

£482.42

Birthing Pelvis

- Model clearly shows passage of head through pelvis during labour
- Pelvic skeleton consists of femurs, sacrum with removable coccyx, 2 lumbar vertebrae and flexibly mounted symphysis
- Foetal skull is flexibly mounted to the pelvis
- Size 33 x 26 x 18cm
- Baseboard mounted



L30 Birthing Pelvis

£294.90

Your local medical supplier is just a phone call away. See cover for full details
Prices shown are exclusive of VAT and delivery

Skin Acne Model

- Enlarged cross section of skin
- Relief detail shows acne pistula (pimple)
- Reverse detail shows open comedo (blackhead)
- Also shown are Epidermis, Dermis and Subcutaneous tissue details of normal skin
- Size 10 x 10 x 11.5cm



J50 Skin Acne Model **£73.13**

Skin Cancer Model

This model shows three cancerous conditions:

- Nodular Basal Cell
 - Malignant Melanoma
 - Morpheic Basal Cell
- And three non cancerous conditions:
- Dyplastic Nevi
 - Keratoacanthoma
 - Basal layer and dermal layer cross sectional detail
 - Size 11.5 x 11.5 x 3cm



J55 Skin Cancer Model **£68.05**

Skin, Hair and Nail Model

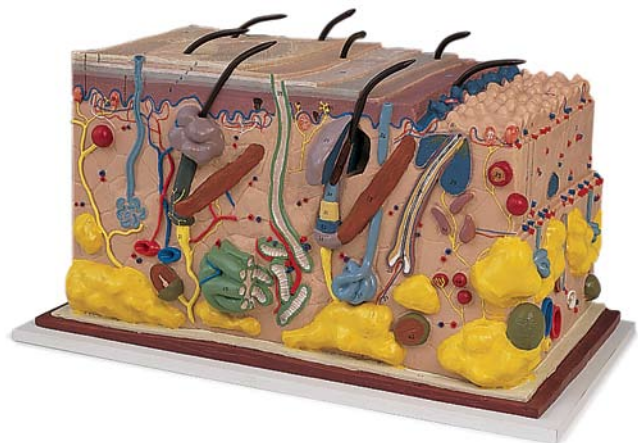
- Shows microscopic structure of the skin in great detail
- Hairless skin and hairy skin is depicted
 - Different cell layers, embedded sweat glands, touch receptor, blood vessels, nerves and hair roots can be seen
 - Nail bed and nail root shown
 - Hair root with all its cell layers completes the model
 - Size 10 x 12.5 x 14cm



J14 Skin, Hair and Nail Model **£51.42**

Skin Block Model

- Highly detailed model 70 times lifesize
- 3 dimensional
- Individual skin layers are differentiated
- Important structures such as hair, sebaceous and sweat glands, nerves and vessels all shown in detail
- Size 44 x 24 x 23cm
- Baseboard mounted



J13 Skin Block Model **£270.70**

Your local medical supplier is just a phone call away. See cover for full details
 Prices shown are exclusive of VAT and delivery